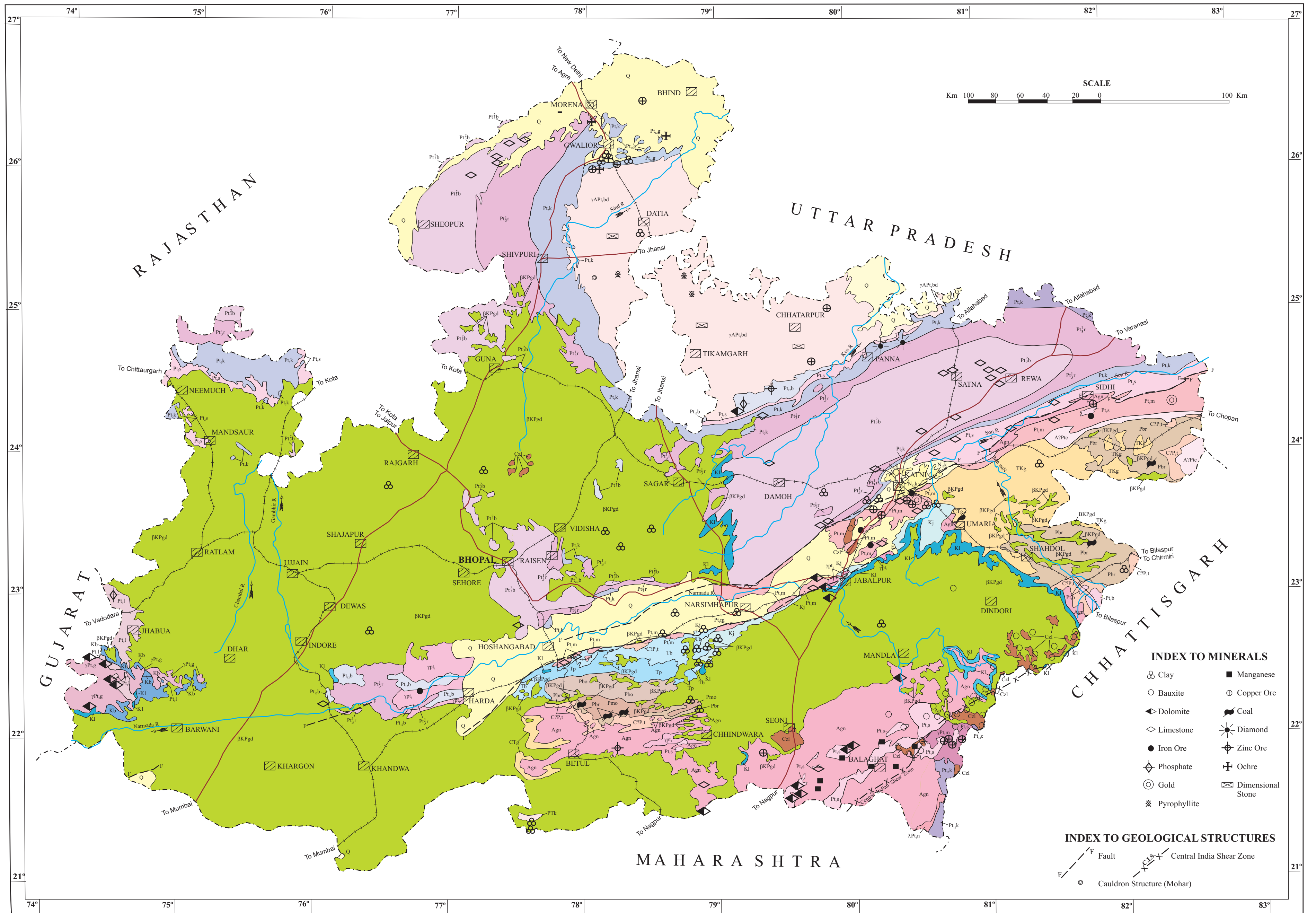




भारतीय भूवैज्ञानिक सर्वेक्षण
Geological Survey of India

मध्यप्रदेश का भूविज्ञान तथा खनिज मानचित्र
GEOLOGICAL AND MINERAL MAP OF MADHYA PRADESH



INDEX TO MINERALS

- Clay
- Bauxite
- Dolomite
- Limestone
- Iron Ore
- Phosphate
- Gold
- Pyrophyllite
- Manganese
- Copper Ore
- Coal
- Diamond
- Zinc Ore
- Ochre
- Dimensional Stone

INDEX TO GEOLOGICAL STRUCTURES

- Fault
- Central India Shear Zone
- Cauldron Structure (Mohar)

Sedimentary and Metamorphic Rocks

- Q Alluvium
- CaL Laterite
- N.K Katni Formation
- Kl Khamrui
- Kb Bhaer
- Kj Jabalpur Formation
- Tb Bagra/Denwa Formation
- TP Pachmarhi/Panchet Formation
- Tkg Undifferentiated Upper Gondwana Sediments (Jabalpur, Bagra, Mahadeva, Parsora Fms.)
- Pso Bijori Formation
- Pmo Motur Formation
- PK Kamthi Formation
- CTg Undifferentiated Lower Gondwana Sediments (Talchir, Barakar, Barren Measures, Raniganj, Pali Fms.)
- Pbc Barakar Formation
- CPTI Talchir Formation/Umaria beds
- Bhander Group
- Rewa Group
- Kaimur Group
- Semri Group
- Bijawar Group
- Sausar Group
- Chhotanagpur Gneissic Complex
- Gneissic Complex with Supracrustals (Amgaon/Betul-Chhindwara/Sidhi, Tirodi gneiss)

- Lameta/Bagh beds
- Gondwana Supergroup
- Vindhyian Supergroup
- Bundelkhand Granite Complex

Plutonic Igneous Rocks

- Godhra Granite
- Granites of Narmada-Son valley
- Malanjhand Granite
- Nandgaon Group

Hypabyssal and Volcanic Rocks

- Deccan Trap

Age

- Quaternary
- Cainozoic
- Mio-pliocene
- Upper Cretaceous to Palaeogene
- Upper Cretaceous
- Upper Carboniferous to Lower Cretaceous
- Neo Proterozoic
- Palaeo Meso Proterozoic
- Palaeo Proterozoic
- Archaean-Palaeo Proterozoic
- Archaean

Digitally Processed & Printed by: Print Page, Nagpur