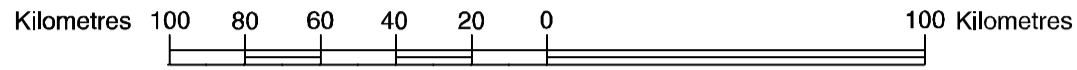


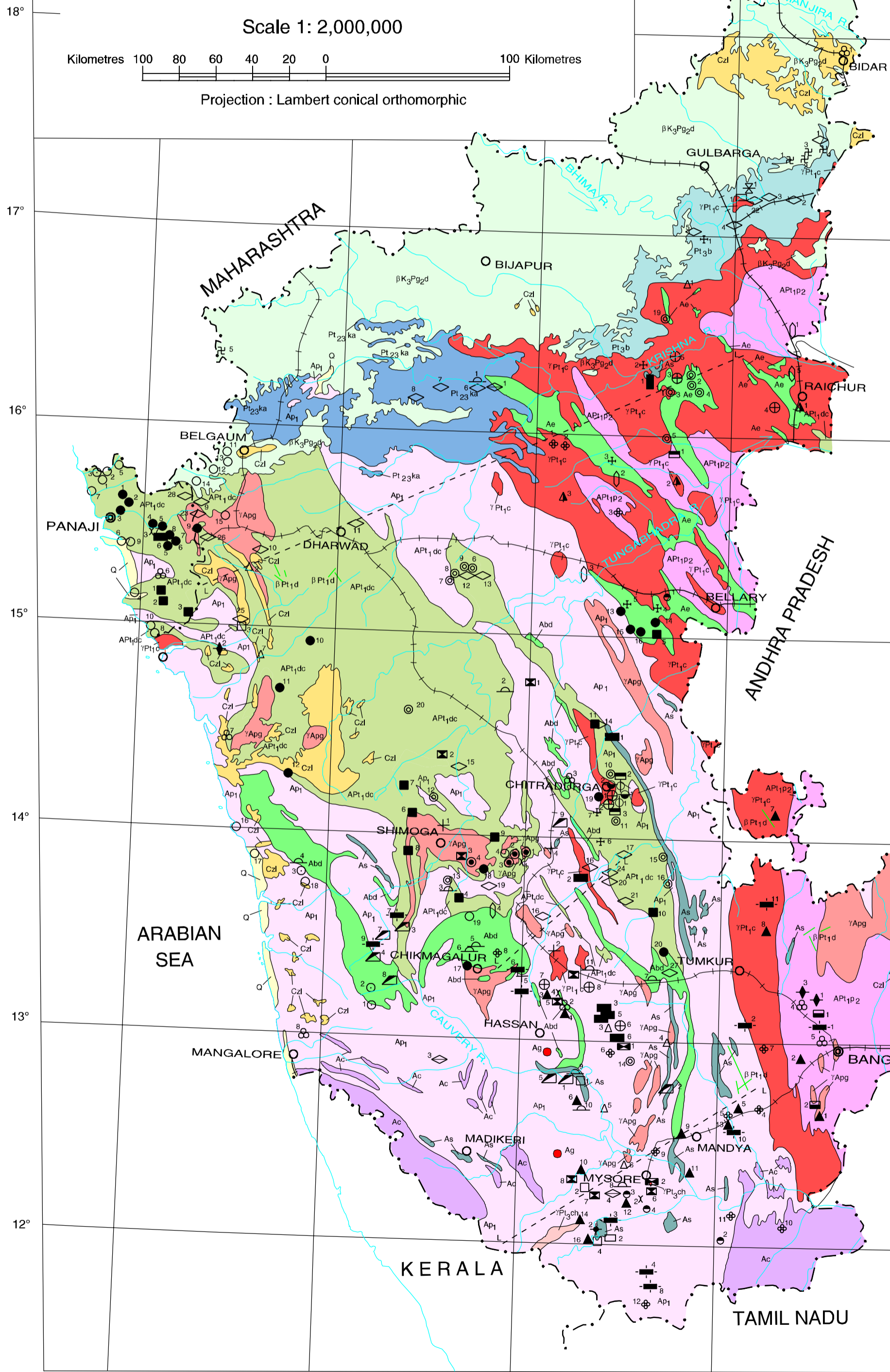


GEOLOGICAL AND MINERAL MAP OF KARNATAKA AND GOA

Scale 1: 2,000,000



Projection : Lambert conical orthomorphic



LEGEND

| | | | | |
|--------------------|--|--------------------------------------|--------------------|-----------------------------------|
| O | Coastal sediments and alluvium | | | Quaternary |
| Czl | Laterite with bauxite | | | Cainozoic |
| βK_3Pg_2d | Basalt with intertrappeans | Deccan Trap | | Cretaceous to Palaeogene |
| γPt_3ch | Potash rich granite | Chamundi Granite | | Neoproterozoic |
| Pt _{3b} | Limestone - shale sequences with basal sandstone | Bhima Group | | Mesoproterozoic to Neoproterozoic |
| P _{23ka} | Dolomite, limestone, breccia, shale and sandstone | | Kaladgi Supergroup | |
| βPt_1d | Dolerite and gabbro | Basic intrusives | | Palaeoproterozoic |
| γPt_1c | Alkali Granite | Closepet Granite | | |
| APt _{1p2} | Potash rich granodiorite & granite | Peninsular Gneiss - II | | Archaean to Proterozoic |
| APt _{1dc} | Volcanic rocks interbedded with sedimentary sequence | Chitradurga Group | | |
| Abd | Metasediments with volcanic sequence; Metavolcanics with metasediments | Bababudun Group / Eastern Greenstone | | Dharwar Supergroup |
| γApg | Granitoid and gneiss | | | |
| Ap ₁ | Tonalite-trondjemite-granodiorite | Peninsular Gneiss - I | | Archaean |
| Ac | Charnockite gneiss and pyroxene granulites | Charnockite Group | | |
| As | High grade schists with metaultramafites | Sargur Group | | |
| Ag | Grey banded biotite gneiss | Gorur Gneiss | | |

STRUCTURAL SYMBOLS



MINERAL INDEX

| | | | |
|---|--------------------|---|-----------------------------|
| ■ | Antimony | ▽ | Kyanite & Sillimanite |
| ▬ | Asbestos | ● | Lead ore |
| □ | Barytes | ■ | Lithium |
| ○ | Bauxite | ◇ | Limestone |
| ■ | Chromite | ● | Magnesite |
| ⊗ | Clay | ■ | Manganese ore |
| ⊕ | Copper ore | ▲ | Molybdenite |
| ▲ | Corundum | ○ | Magnetite |
| ◇ | Dolomite | ◆ | Nickel |
| ■ | Feldspar | + | Ochre |
| + | Fuchsite quartzite | ⊕ | Ornamental stone |
| ⊕ | Fuller's earth | x | Platinoids |
| □ | Garnet | ▴ | Sillimanite |
| ■ | Gemstone | ▬ | Steatite |
| ⊙ | Gold | ∩ | Quartz and silica sand |
| ◆ | Graphite | γ | Tungsten ore |
| ⊗ | Gypsum | ⊙ | Titani-vaniferous magnetite |
| ● | Haematite | ▬ | Vermiculite |
| | | △ | Uranium & rare earths |
| | | φ | Zinc |

Geographical details based upon Survey of India map with the permission of Surveyor General of India.

The territorial waters of India extend into the sea to a distance of twelve nautical miles measured from the appropriate base line.

National highways, major roads and railway trunk routes only are shown.