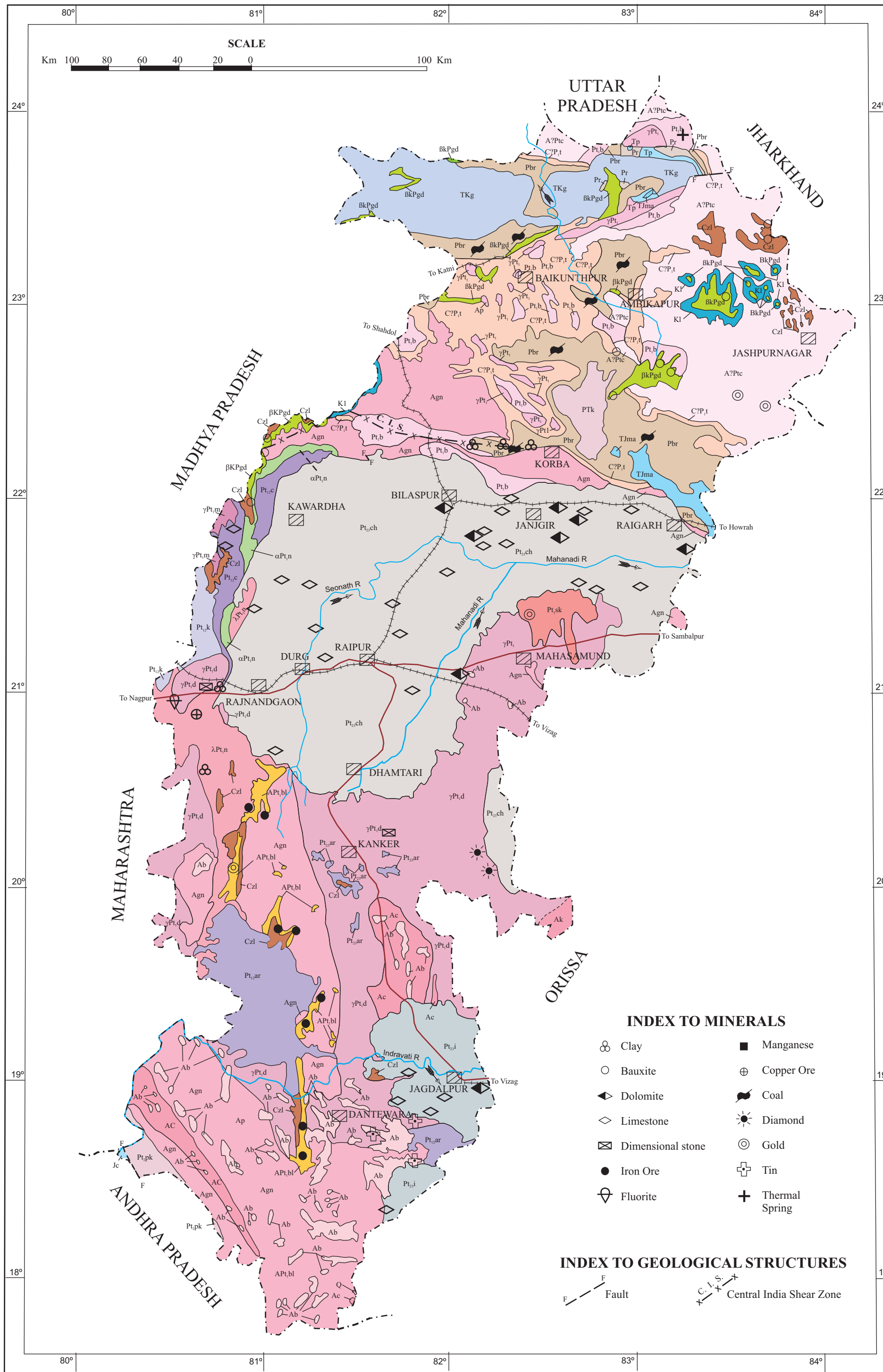


भारतीय भूवैज्ञानिक सर्वेक्षण  
Geological Survey of India

छत्तीसगढ़ का भूविज्ञान तथा खनिज मानचित्र  
GEOLOGICAL AND MINERAL MAP OF CHHATTISGARH



INDEX TO MINERALS

- Clay
- Bauxite
- ◀ Dolomite
- ◇ Limestone
- ⊠ Dimensional stone
- Iron Ore
- ◇ Fluorite
- Manganese
- ⊕ Copper Ore
- ⬛ Coal
- ⚡ Diamond
- ⊙ Gold
- ⊕ Tin
- ⊕ Thermal Spring

INDEX TO GEOLOGICAL STRUCTURES

- F Fault
- C.S.Z. Central India Shear Zone

Sedimentary and Metamorphic Rocks

- Czl Laterite
- Kl Lameta Group
- Jc Chikiala Formation
- Tjma Mahadeva Formation
- Tkg Undifferentiated Gondwana Sediments, (Jabalpur-Parsora-Tiki Fms.)
- Tp Panchet Formation
- PTK Kamthi Formation
- Pbr Barakar Formation
- Pr Raniganj Formation
- C7P1 Talchir Formation
- Indravati Group
- Ptch Chhattisgarh Supergroup
- Ptck Pakhal Supergroup
- Ptcl Chilpi Group
- Ptcl Unclassified Metamorphics of Bilaspur-Raigarh-Ambikapur Region
- A7Pc Chhota Nagpur Gneissic Complex
- Ab Bengpal Group
- Ac/Ak Charnockite/Khondalite Group

Plutonic Igneous Rocks

- Ptck Chhattisgarh Supergroup
- Ptck Khairagarh Group
- Ptck Sonakhan Group
- APtcl Bailadila Group
- Agn Gneisses of Bastar
- Ptck Abujmar Group
- γPtcl Dongargarh Granite/Granite of Bilaspur-Raigarh-Sarguja belt
- αPtcl Pitepani volcanics/Bijli Rhyolite (Nandgaon Group)

Hypabasal and Volcanic Rocks

- BkPgd Deccan Trap

Age

- Cainozoic
- Cretaceous to Palaeogene
- Upper Cretaceous
- Upper Carboniferous
- to
- Lower Cretaceous
- Meso - Neo-Proterozoic
- Meso-Proterozoic
- Palaeo - Meso - Proterozoic
- Palaeo-Proterozoic
- Archaean-Palaeo-Proterozoic
- Archaean